

Basic Socio-Economic Indicators for Selected East Asian Countries

Country	GNP per capita (US\$)		Average annual growth rate of GNP per capita 1965-90 (%)	Life expectancy at birth 1990 (years)	Income distribution		Population below poverty line	
	1976	1990			Lowest 20 percent share of total*	Gini coefficient 1975-88 average	Total (%) 1980-89 average	Rural (%) 1980-89 average
Korea, Republic of	670	5400	7.1	71	-	0.36	16	11
Malaysia	860	2320	4.0	70	4.6	0.48	27	38
Philippines	410	730	1.3	64	5.5	0.45	58	64
Thailand	380	1420	4.4	66	6.1	0.47	30	34
	GDP per capita (US\$)		Growth rate of GDP per capita 2003-04 (%)	Life expectancy at birth 2004	Lowest 20 percent share of total 2002	Gini coefficient 2002	Total (%) 2002	Rural (%) 2002
	1976	2004						
Vietnam	-	550	6.6	70	7.5	0.37	29	36

Note: *Data relate to 1987 (Malaysia), 1985 (Philippines), and 1988 (Thailand).

Sources: Data for Republic of Korea, Malaysia, Philippines and Thailand are compiled based on *World Development Report 1976, 1992, 1993* and *Human Development Report 1992*. Vietnam data are based on *World Development Indicators 2006*.

Structure of Production: Distribution of Gross Domestic Product (%)

Country	Agriculture		Industry		Manufacturing		Services	
	1965	1990	1965	1990	1965	1990	1965	1990
Korea, Republic of	38	9	25	45	18	31	37	46
Malaysia	28	14*	25	43*	9	32*	47	42*
Philippines	26	22	27	35	20	25	47	43
Thailand	32	12	23	39	14	26	45	48
	1990	2004	1990	2004	1990	2004	1990	2004
Vietnam	39	22	23	40	12	20	39	38

Note: Manufacturing is a component of industry. Except for rounding errors, the shares of agriculture, industry, and services should sum to 100.

Malaysia data are based on figures in 1994.

Sources: *World Development Report 1992, 1996*, and *World Development Indicators 2006*.

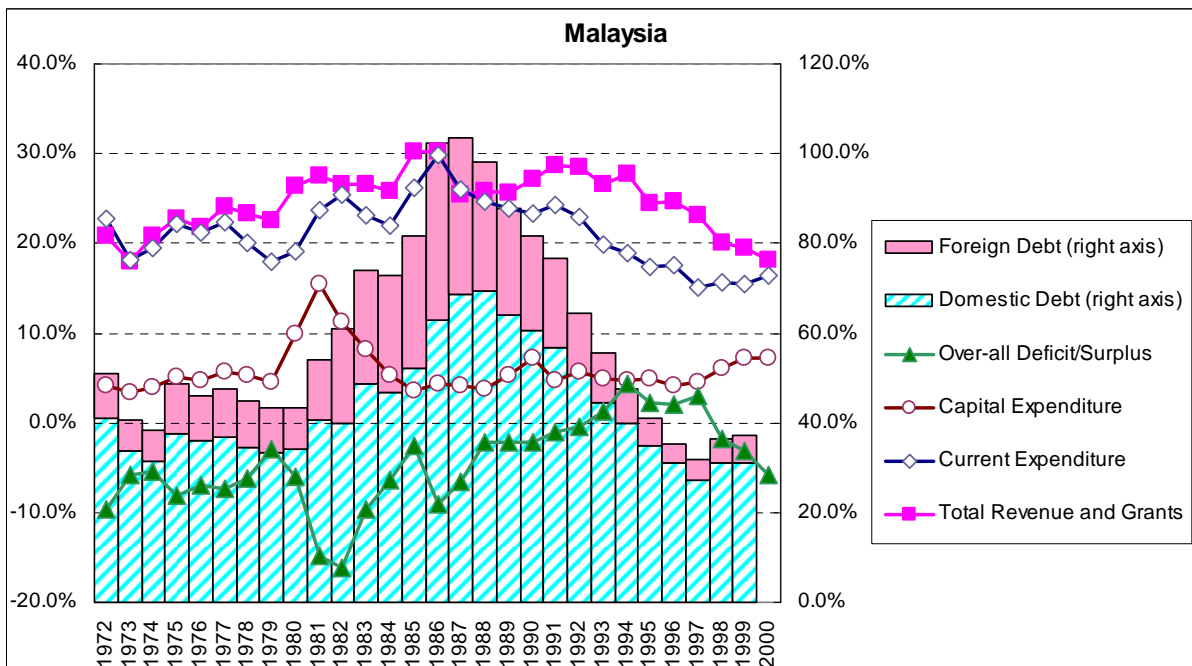
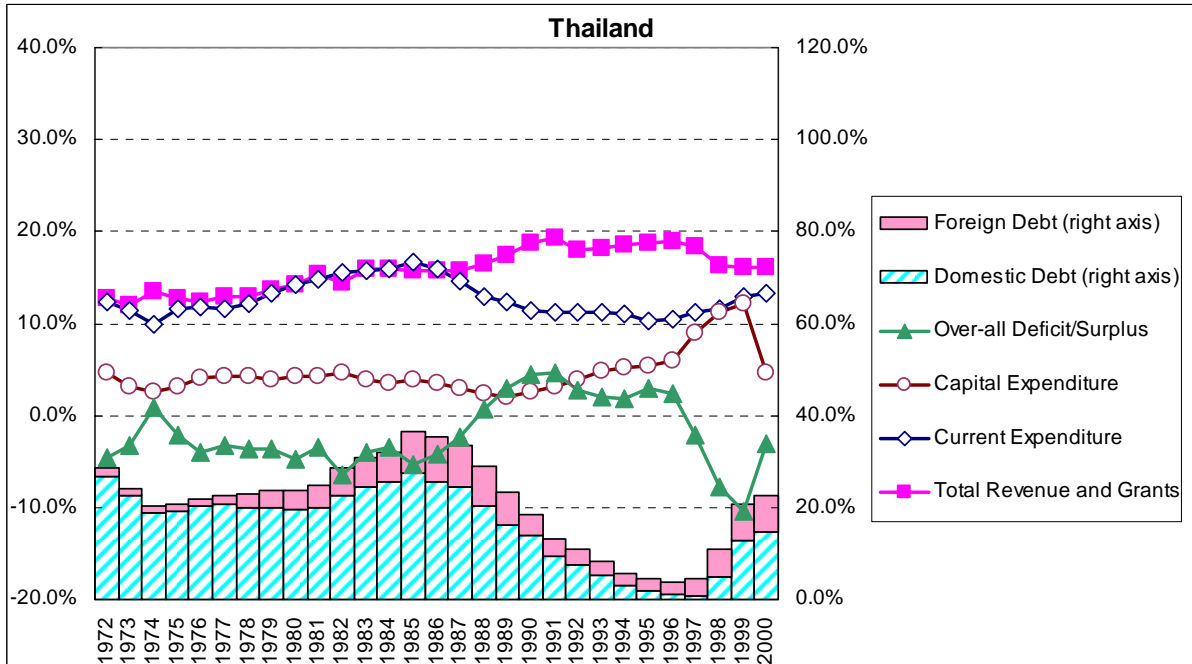
Aid Dependency

	ODA+WB+ADB amount received (US\$)		ODA+WB+ADB as a percentage of central government expenditure		ODA per capita 1988	ODA as a percentage of GNP 1988
	1975	1988	1975	1988		
Malaysia	\$181mil	\$391 mil	6.2%	4.7%	\$6.1	0.3%
Philippines	\$314mil	\$1403 mil	13.2%	21.6%	\$14.3	2.2%
Thailand	\$177mil	\$862 mil	8.0%	9.8%	\$10.3	1.0%
Vietnam (2004)	-	\$2013 mil	-	19.2%	\$22	4.5%

Sources: The amount of aid (ODA+WB+ADB, gross) is calculated based on OECD/DAC, *Geographical Distribution of Financial Flows to Aid Recipients 2000/2004*.

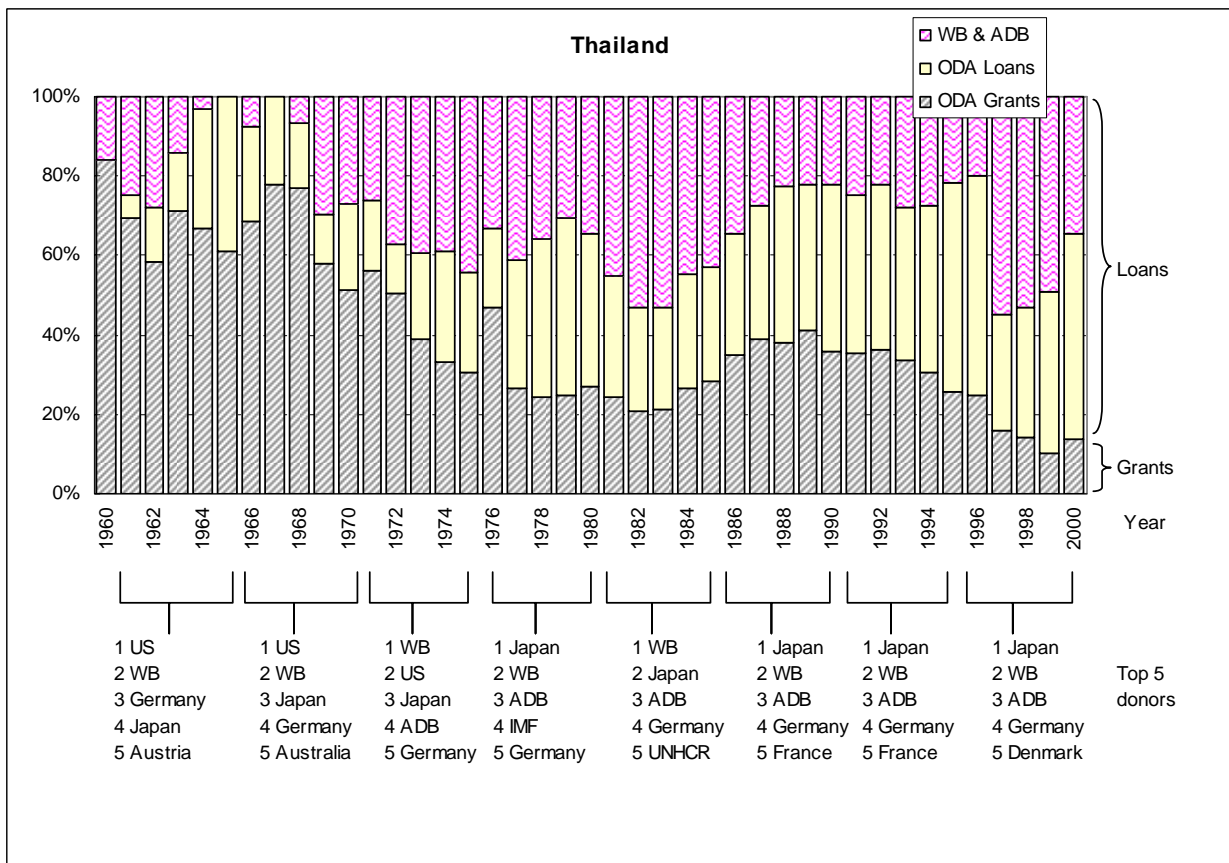
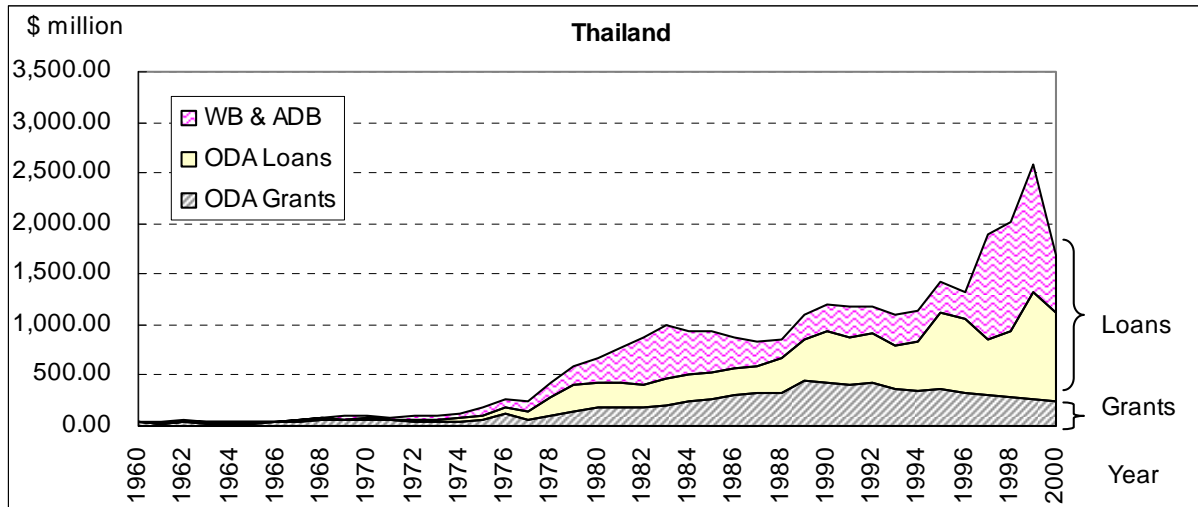
Aid amount as a percentage of expenditures is calculated based on *Key Indicators of Developing Asian and Pacific Countries 1993, 2005*, and *World Development Report 1990*.

Selected Fiscal Indicators
(Percentage of GDP)

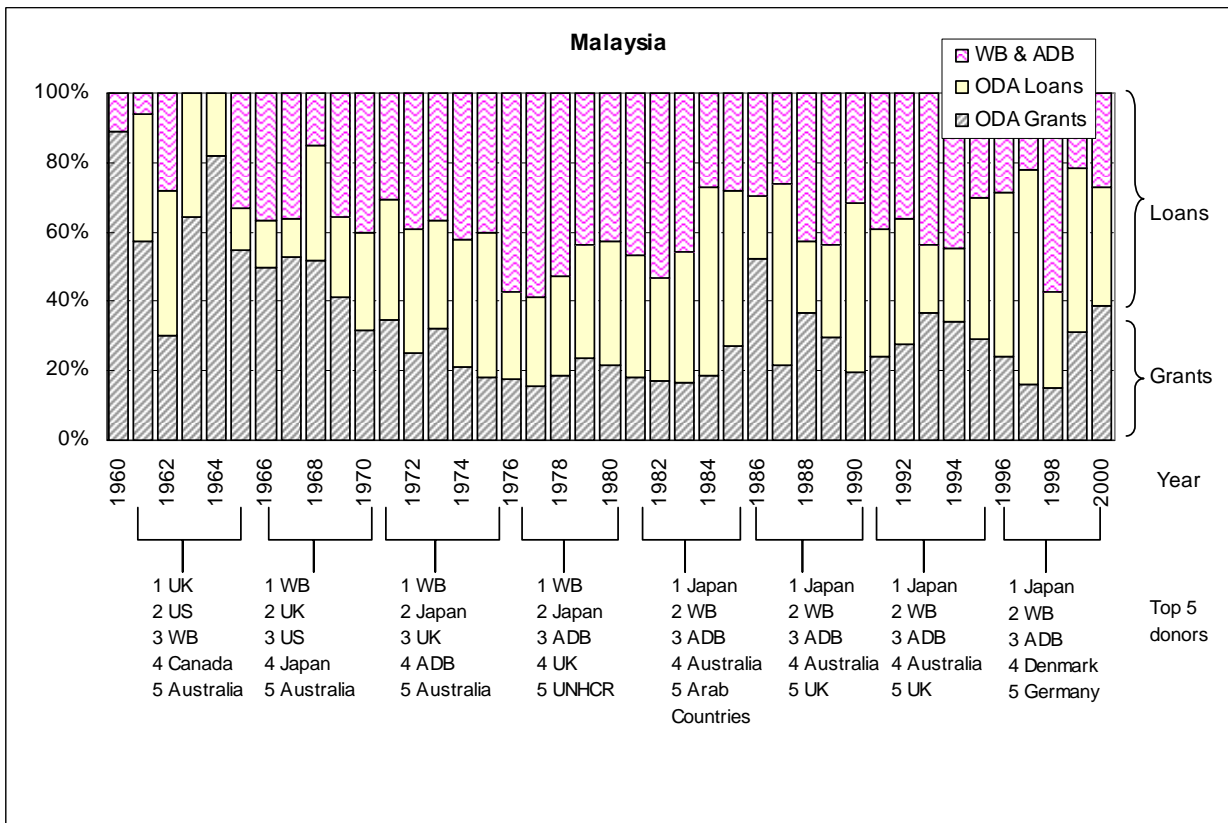
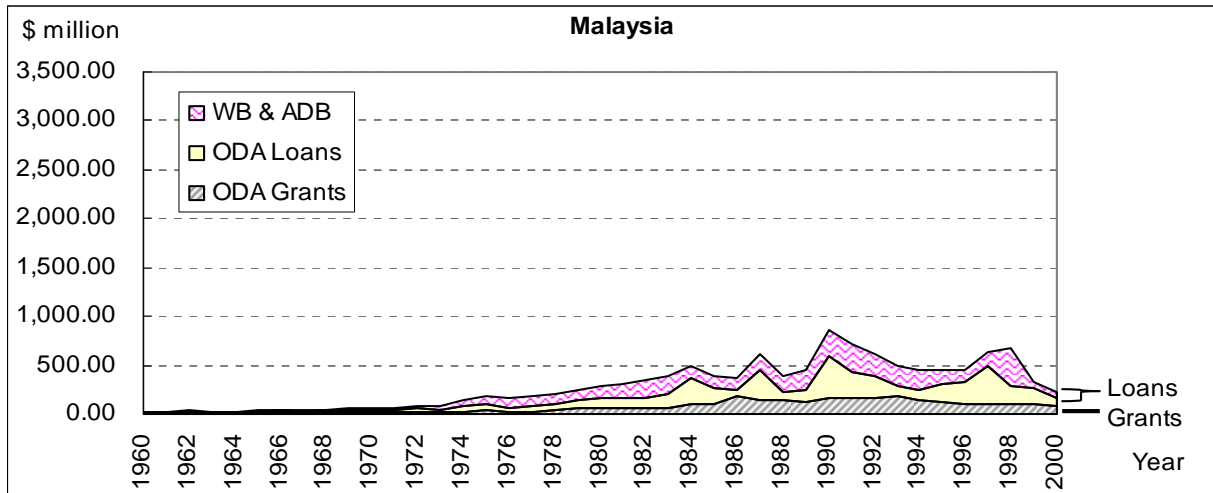


Sources: IMF, *Government Finance Statistics Yearbook* (1983, 1990, 1996, 2002),
IMF, *International Financial Statistics Yearbook* (1992, 1997, 2004),
ADB, *Key Indicators of Developing Asian and Pacific Countries* (2002, 2003).

Mobilization of Official Development Finance



Note: The amount of aid (including WB & ADB) is calculated on a gross disbursement base.
 Source: OECD/DAC, *Geographical Distribution of Financial Flows to Aid Recipients 2000/2004*.



Note: The amount of aid (including WB & ADB) is calculated on a gross disbursement base.
 Source: OECD/DAC, *Geographical Distribution of Financial Flows to Aid Recipients 2000/2004*.