

Basic Socio-Economic Indicators for Selected East Asian Countries, 1965-90

Country	GNP per capita (US\$)		Average annual growth rate of GNP per capita 1965-90 (%)	Life expectancy at birth 1990 (years)	Income distribution		Population below poverty line	
	1976	1990			Lowest 20 % share of income	Gini coefficient 1975-88	Total (%) 1980-89	Rural (%) 1980-89
Korea, Republic of	670	5400	7.1	71	-	0.36	16	11
Malaysia	860	2320	4.0	70	4.6 (1987)	0.48	27	38
Philippines	410	730	1.3	64	5.5 (1985)	0.45	58	64
Thailand	380	1420	4.4	66	6.1 (1988)	0.47	30	34

	GNP per capita(US\$) 1976	GNI per capita(US\$) 2004	Growth rate of GDP per capita 2003-2004 (%)	Life expectancy at birth 2004	Lowest 20 % share of income	Gini coefficient 2002	Total (%)	Rural (%)
Kenya	240	460	0.4	48	6.0 (1997)	0.43	52 (1997)	53 (1997)
Tanzania	180	330	4.3	46	7.3 (2000-01)	0.35	35.7 (2000-01)	38.7 (2000-01)

Source: Data for Republic of Korea, Malaysia, Philippines and Thailand are compiled based on *World Development Report 1992*, *World Development Report 1993* and *Human Development Report 1992*. Data on Kenya and Tanzania are based on *World Development Indicators 2006* and *World Development Report 2006*.

Structure of Production: Distribution of Gross Domestic Product (%)

Country	Agriculture		Industry		Manufacturing		Services	
	1965	1990	1965	1990	1965	1990	1965	1990
Korea, Republic of	38	9	25	45	18	31	37	46
Malaysia	28	14*	25	43*	9	32*	47	42*
Philippines	26	22	27	35	20	25	47	43
Thailand	32	12	23	39	14	26	45	48

	1990	2004	1990	2004	1990	2004	1990	2004
Kenya	30	27	19	17	12	11	51	56
Tanzania	46	45	18	17	9	7	36	39

Note: Manufacturing is a component of industry. Except for rounding errors, the shares of agriculture, industry, and services should sum to 100. Malaysia data are based on figures in 1994.

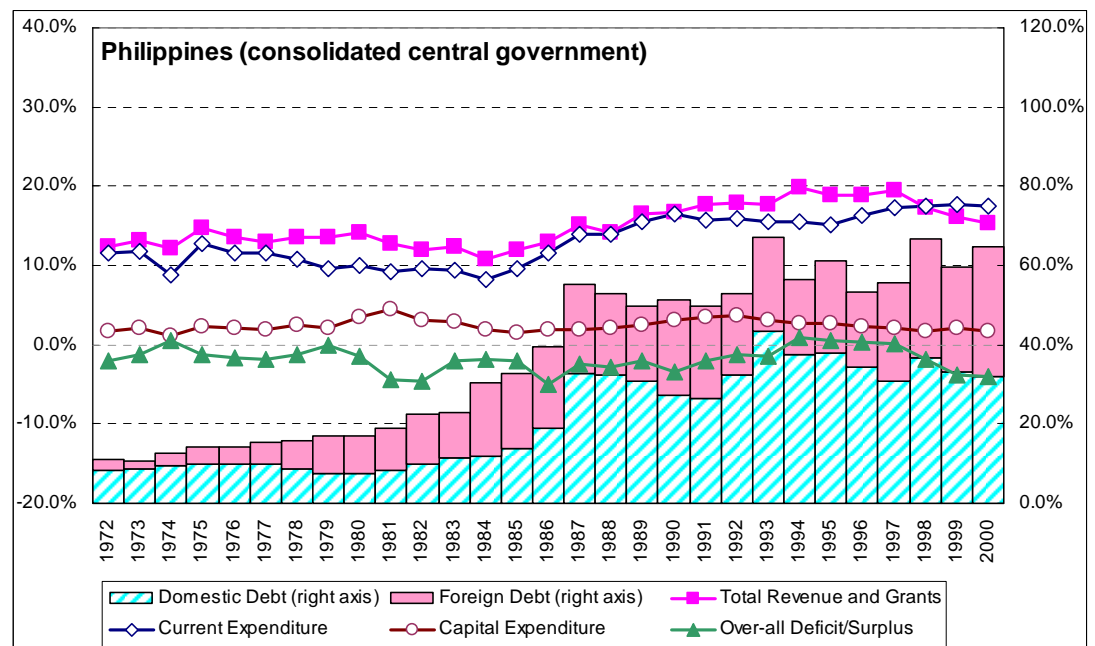
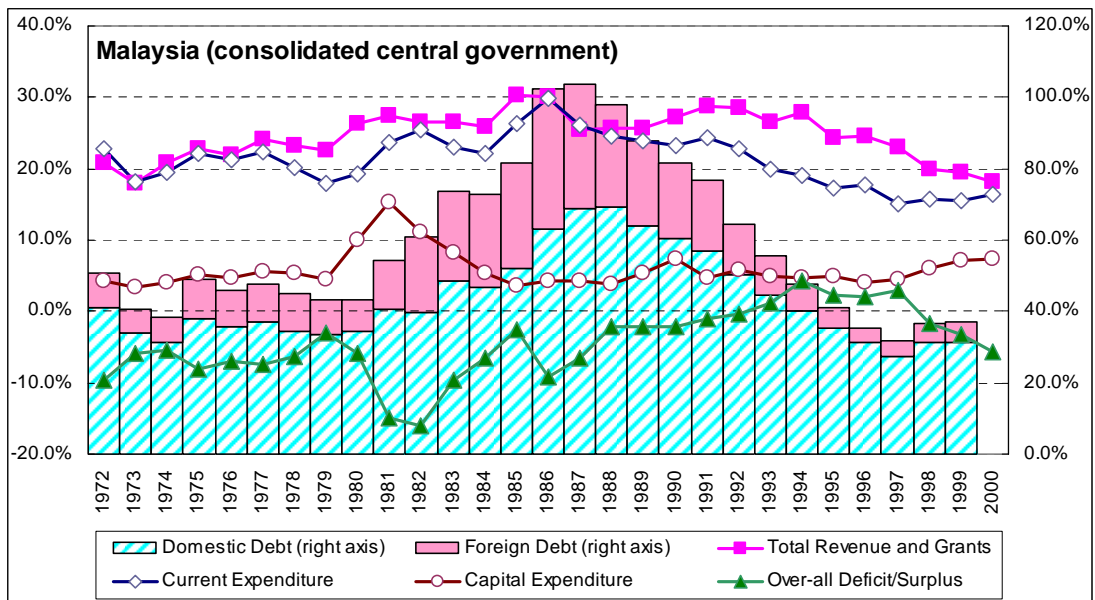
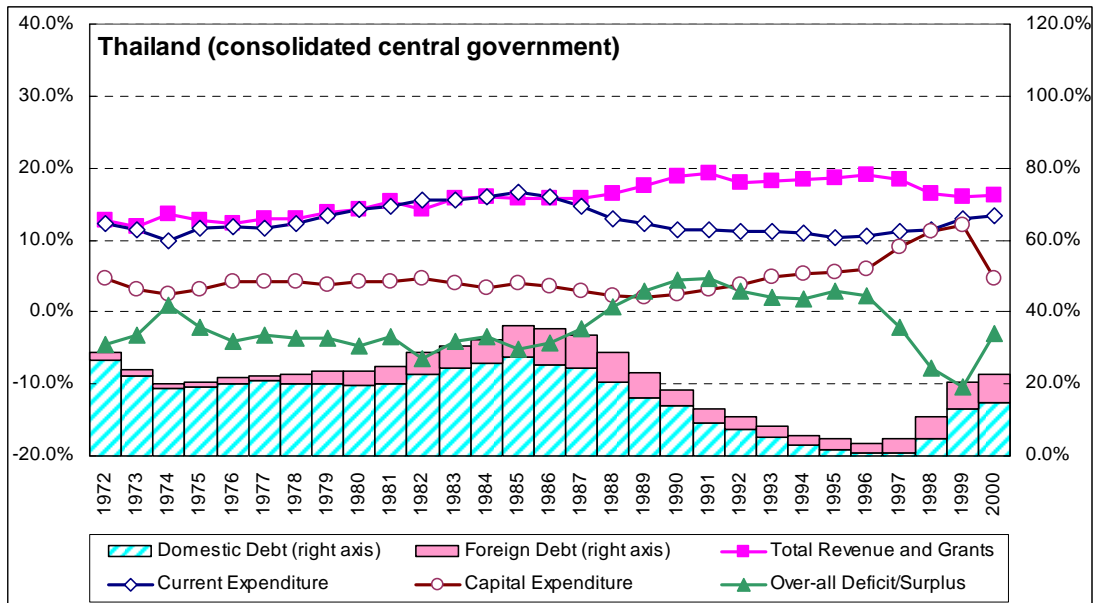
Source: *World Development Report 1992*, *1996*, and *World Development Indicators 2006*.

Aid Dependency

	Amount received (\$ million)	ODA+WB+ADB as a percentage of total central government expenditure	(ODA+WB+ADB as a percentage of capital expenditure)	ODA net per capita	ODA net as a percentage of GNP
Malaysia (1988)	\$391 mil	4.7%	(25.3%)	\$6.1	0.3%
Philippines (1988)	\$1403 mil	21.6%	(162.2%)	\$14.3	2.2%
Thailand (1988)	\$862 mil	9.8%	(73.8%)	\$10.3	1.0%
Kenya (2004)	\$780mil	22.4%	(-)	\$19	4.0%
Tanzania(2004)	\$1981mil	66.8%	(-)	\$46	16.2%

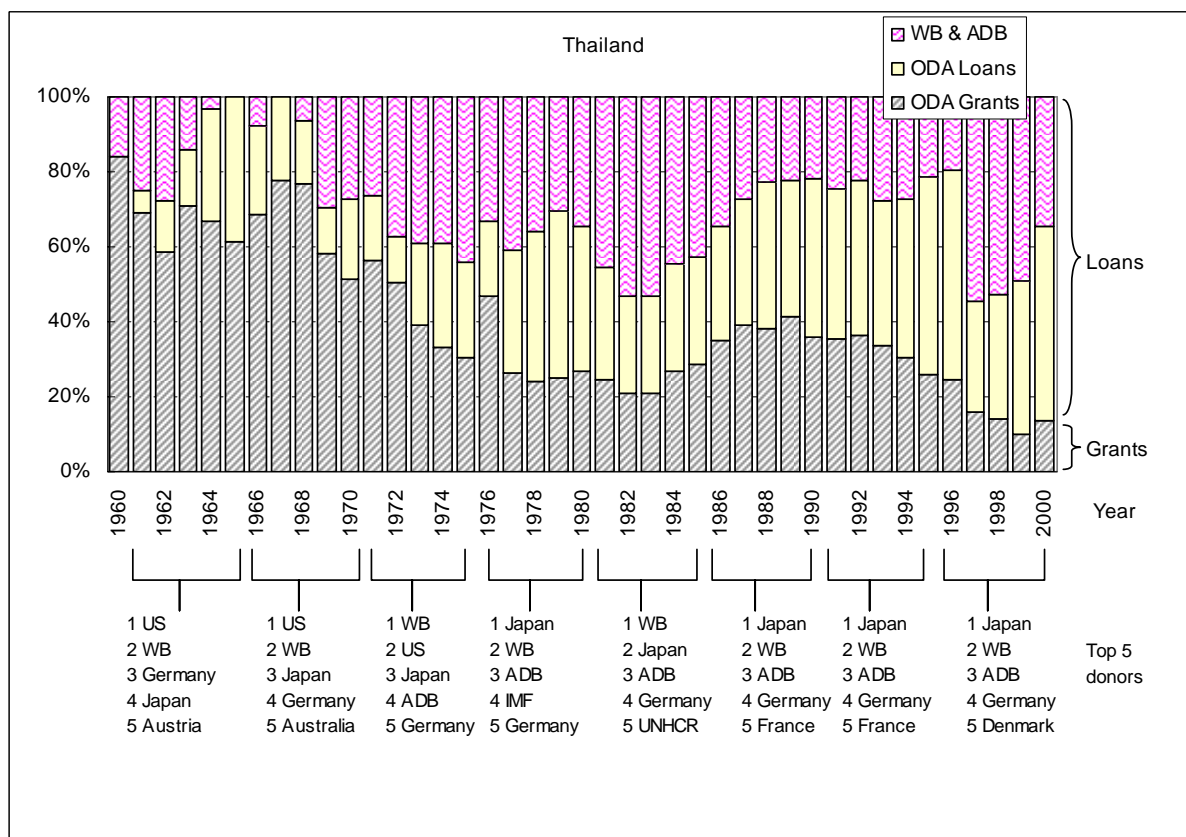
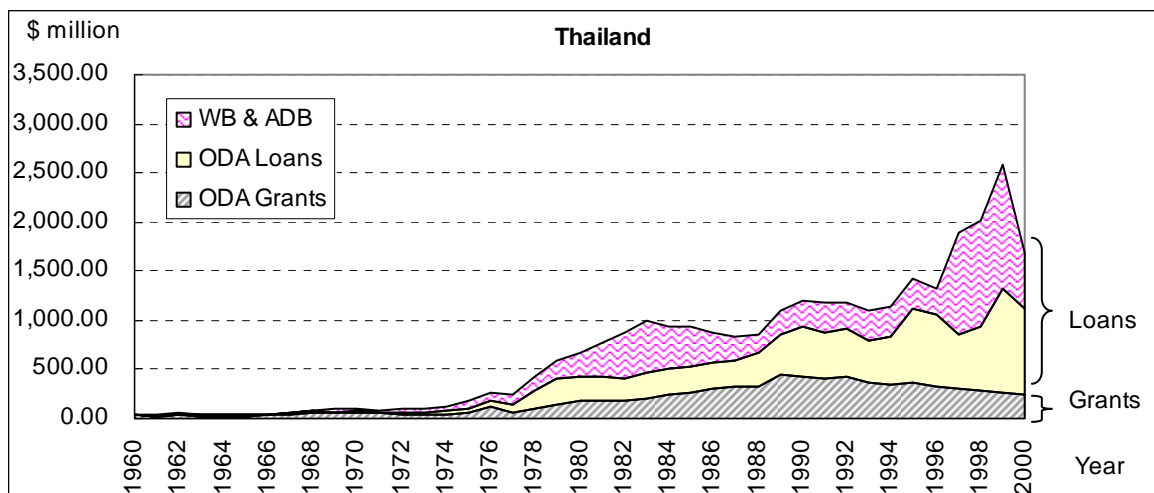
Source: Amount of aid (ODA+WB+ADB, gross) is calculated based on OECD/DAC, *Geographical Distribution of Financial Flows to Aid Recipients 2000/2004*. Aid amount as a percentage of expenditures is calculated based on *Key Indicators of Developing Asian and Pacific Countries 1993, 2005*, and *World Development Report 1990*. Data on Kenya and Tanzania are calculated based on *International Financial Statistics Yearbook 2005*.

Selected Fiscal Indicators (Percentage of GDP)

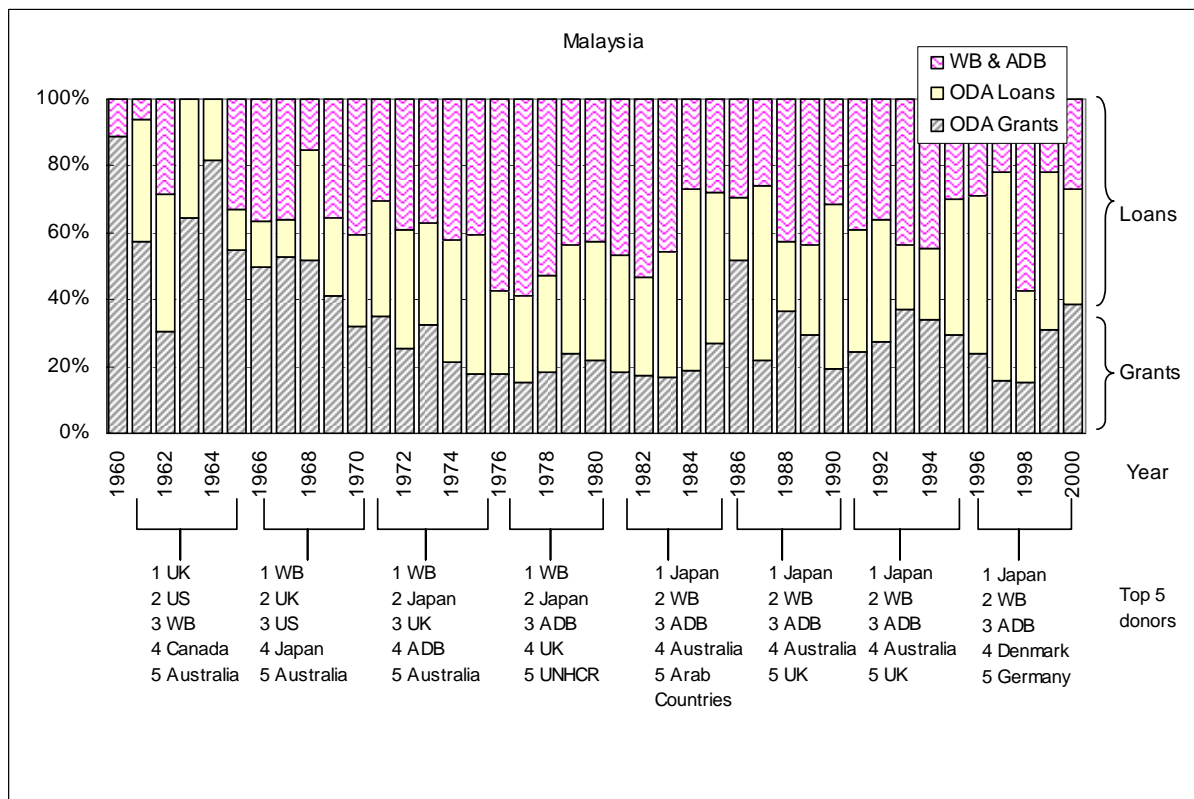
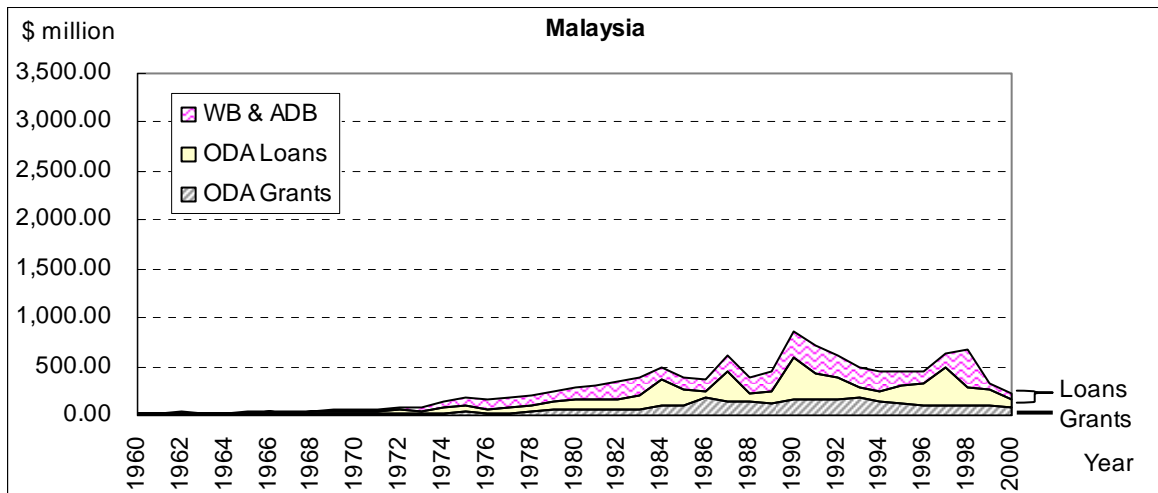


Source: *Government Finance Statistics Yearbook* (various years), *International Financial Statistics* (various years) and *Key Indicators of Developing Asian and Pacific Countries* (various years).

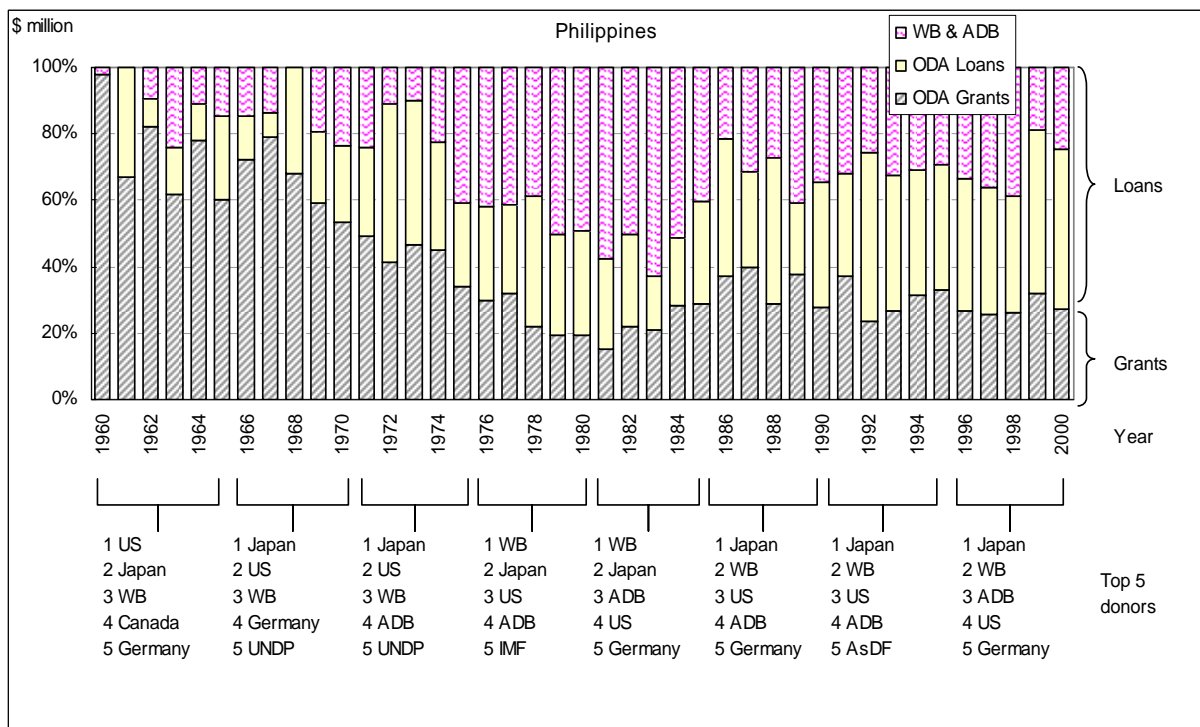
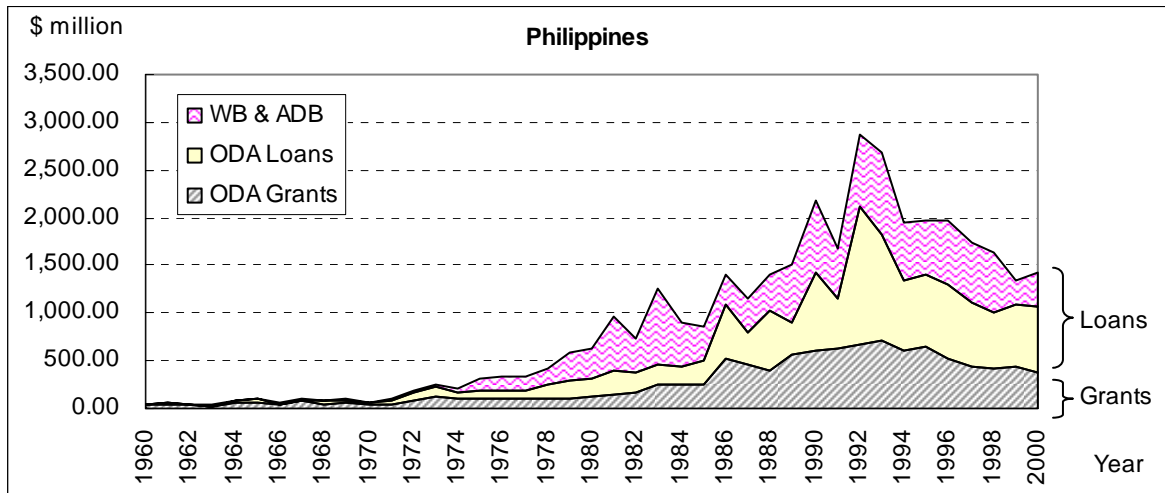
Mobilization of Official Development Finance



Note: The amount of aid (including WB and ADB) is calculated on a gross disbursement base.
 Source: OECD/DAC, *Geographical Distribution of Financial Flows to Aid Recipients 2000/2004*.



Note: The amount of aid (including WB and ADB) is calculated on a gross disbursement base.
 Source: OECD/DAC, *Geographical Distribution of Financial Flows to Aid Recipients 2000/2004*.



Note: The amount of aid (including WB and ADB) is calculated on a gross disbursement base.
 Source: OECD/DAC, *Geographical Distribution of Financial Flows to Aid Recipients 2000/2004*.